

# Twiflex Compact Disc Brake Caliper Range

Founded in 1946, Twiflex specialises in the design and production of a range of mechanical power transmission components that includes industrial disc brakes, centrifugal clutches and resilient couplings.

The core business is built on the world's broadest range of caliper brakes; from light-duty, hand-applied holding brakes for the textile industry to spring-applied hydraulic emergency brakes for mining applications.

Customer Service and Application Support

**Twiflex UK (HQ):**  
+44 (0) 20 8894 1161

**Twiflex Germany:**  
+49 (0) 6221 304719

**Twiflex USA:**  
+1 844 723 3483

[www.twiflex.com](http://www.twiflex.com)



The MU caliper is the smallest lever brake in the Twiflex range. Typically it is used for light duty stopping and holding on 8 mm or 12.7 mm thick discs.

Max. braking force: 2.75 kN

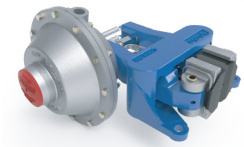
MU	Direct Applied	Spring Applied
Manual	o	•
Pneumatic	•	•
Hydraulic	o	o
Electric	o	o



The MS (aluminium construction) and MS100 (cast iron construction with pivoting shoes) calipers are designed to be used with 12.7 mm thick discs.

Max. braking force: 2.76 kN

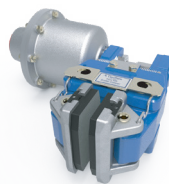
MS/MS100	Direct Applied	Spring Applied
Manual	•	•
Pneumatic	•	•
Hydraulic	•	•
Electric	o	o



The MR brake is a base-mounted (the SMR is available for side-mounting) lever type design. Discs of 12.7 mm or 25.4 mm thickness should be used.

Max. braking force: 10.8 kN

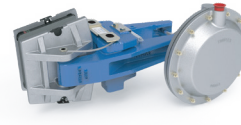
MR/SMR	Direct Applied	Spring Applied
Manual	•	•
Pneumatic	•	•
Hydraulic	•	•
Electric	o	•



The MX range of calipers can accommodate 12.7 mm, 25.4 mm, 30 mm and 40 mm thick discs, and features a side-mounted option (SMX) for installation flexibility.

Max. braking force: 14.3 kN

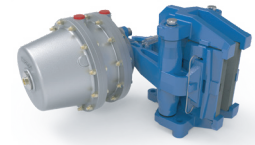
MX/SMX	Direct Applied	Spring Applied
Manual	•	•
Pneumatic	•	•
Hydraulic	•	•
Electric	o	•



The GMX is a large-pad version of the MX range, for use where higher power dissipation is required. Disc thickness should be 25.4 mm, 30 mm, or 40 mm.

Max. braking force: 14.3 kN

GMX	Direct Applied	Spring Applied
Manual	•	•
Pneumatic	•	•
Hydraulic	•	•
Electric	o	•



The GMR caliper is Twiflex's largest lever brake design for heavy-duty stopping and holding duty. It is used on discs of 25.4 mm or 40 mm thickness.

Max. braking force: 36.0 kN

GMR	Direct Applied	Spring Applied
Manual	o	•
Pneumatic	•	•
Hydraulic	•	•
Electric	o	•



The T2 is the smallest modular (piston and cylinder type) design in the Twiflex range. Suitable for disc thickness over 5 mm, it may be operated using air or oil.

Max. braking force: 2.0 kN

T2	Direct Applied	Spring Applied
Manual	o	o
Pneumatic	•	•
Hydraulic	•	o
Electric	o	o



The T20 is a side-mounted brake for use on discs from 12.7 mm upwards. The split caliper design also permits centre-mounting on discs exceeding 20 mm thick.

Max. braking force: 20.0 kN

T20	Direct Applied	Spring Applied
Manual	o	o
Pneumatic	o	o
Hydraulic	•	o
Electric	o	o



The T40 brake requires a minimum disc thickness of 20 mm. The brake modules are mounted each side of a central plate of the same thickness as the disc.

Max. braking force: 45.0 kN

T40	Direct Applied	Spring Applied
Manual	o	o
Pneumatic	o	o
Hydraulic	•	o
Electric	o	o

Note: The stated braking force is the nominal value based on  $\mu = 0.4$



**BIBUS**  
SUPPORTING YOUR SUCCESS

BIBUS SK, s.r.o  
Trnavská 31, SK-94 901 Nitra

Tel.: 037/ 7777 911    Email: sale@bibus.sk  
Fax.: 037/ 7777 999    http://www.bibus.sk